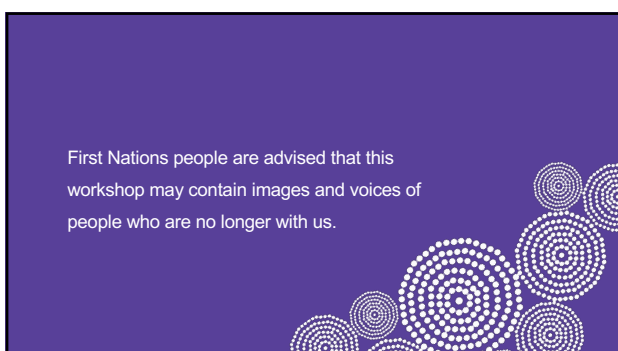




1



2




3




4


Meet the Presenters



Lynda Hunt
Queensland Coordinator
Positive Partnerships



Jennifer Winstone
Speech Therapist
Co-founder of
Communication Spectrum




Jessica Shahbazi
Teacher
Co-founder of
Communication Spectrum

5


Session intentions

Explore what communication is and different ways autistic people communicate




Consider the importance of being a communication partner


Ola!



Identify how communication supports the young person to feel connected and belong by making interactions engaging and enjoyable



Identify where you can seek support



6




What is COMMUNICATION?

Communication is more than speech

Hi!


Merhaba



7

Expressive communication

Sharing a message



Receptive communication

Understanding communication





8



9

Why we communicate

Reason to communicate

- Express needs and wants
- Connect with others
- Share interests, thoughts and experiences
- Protest, refuse or say “no”
- Feel understood and included

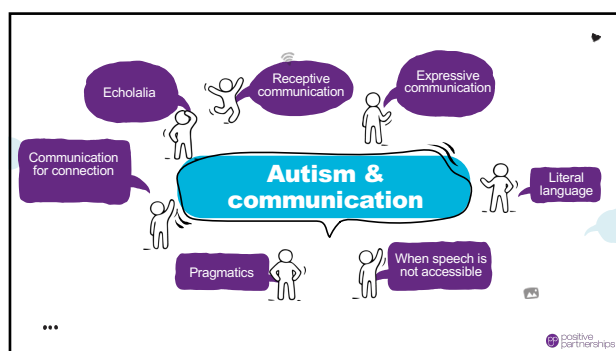
10

Communication changes across environments

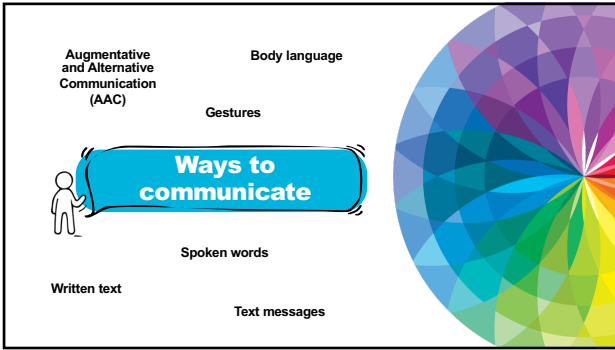
Communication access

- Stress and overwhelm
- Processing demands
- Sensory demands
- Emotional regulation
- Familiarity and support

11



12



13



14



15

Augmentative and Alternative Communication (AAC) aids communication

Low tech AAC can be visuals or pictures

High tech AAC can be a speech generating device

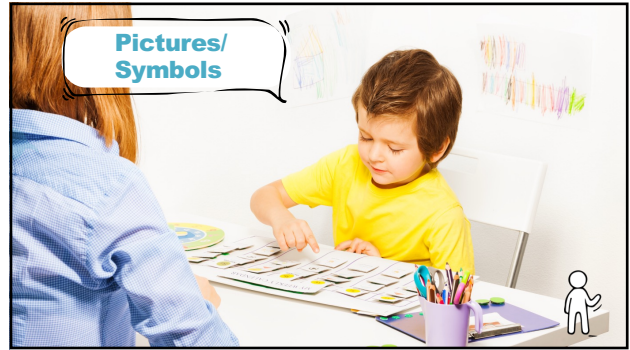
AAC

positive partnerships

16



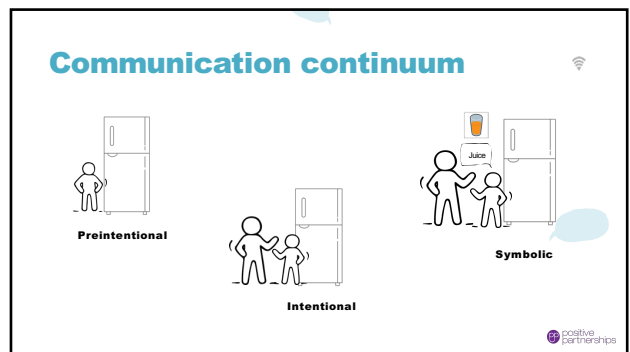
17



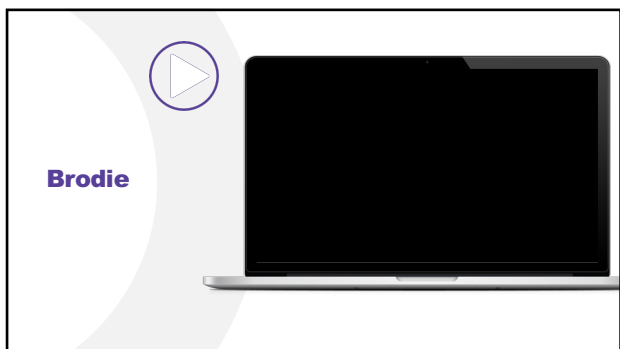
18



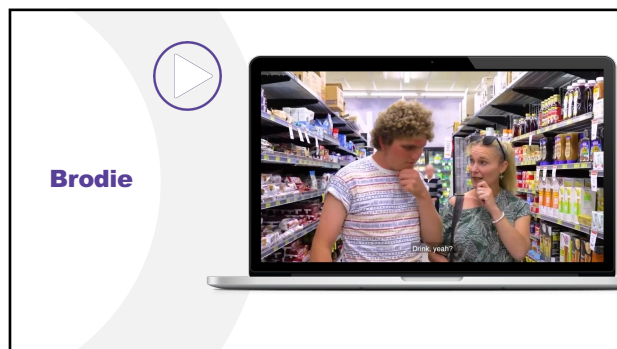
19



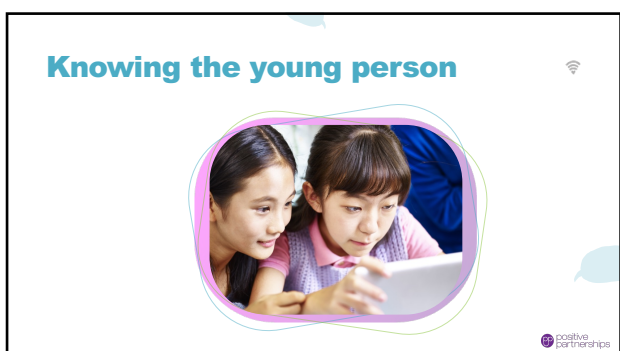
20



21



22



23




24



25

Social communication




Autistic person

May struggle to:

- Read "between the lines"
- Overcome other peoples' misconceptions about autism
- Manage sensory distractions

The double empathy problem

Both parties may struggle to understand each other's thoughts, feelings, behaviour and differences

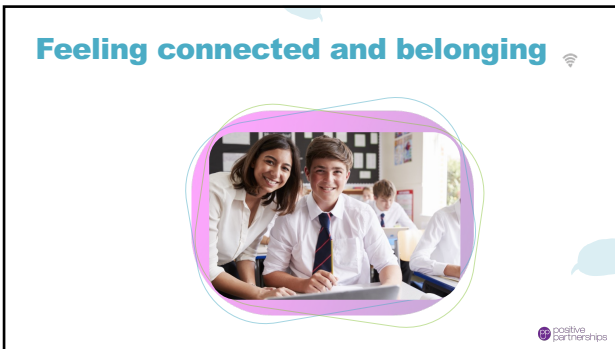


Non-autistic person

May struggle to:

- Form positive first impressions
- Recognise and understand autism
- Imagine autistic sensory difficulties

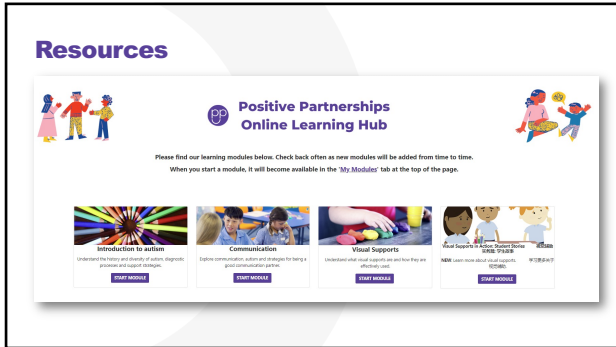
37



38



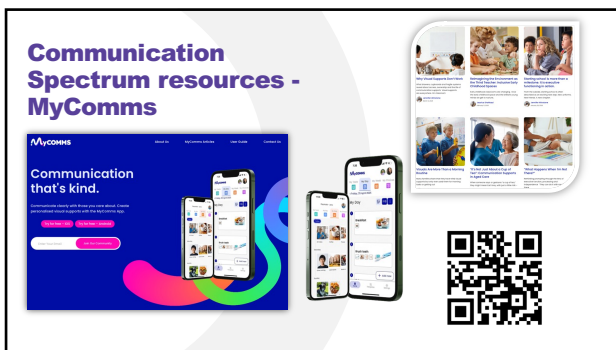
39



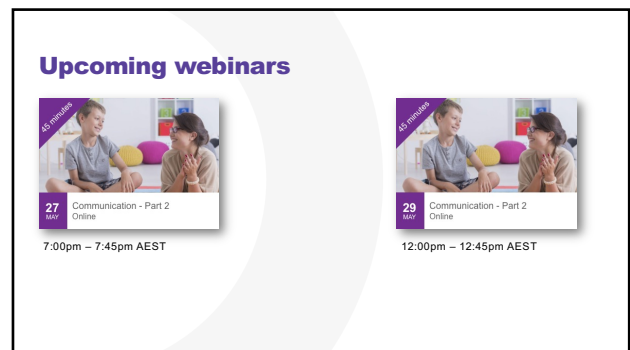
40



41



42



43